



***If anyone should ask you,***

“How can I recognize Genuine VW Spare Parts?” it isn’t enough for you to say, “Because they’re better”. This is something the VW driver can’t appreciate until the repair job is done and he is pleased with it. The proper way is to explain that the registered VW trade mark is cast, punched, etched or stamped on most Genuine VW Spare Parts, or else they bear a sticker vouching for their authenticity.



***Genuine VW Spare Parts rigidly factory inspected***

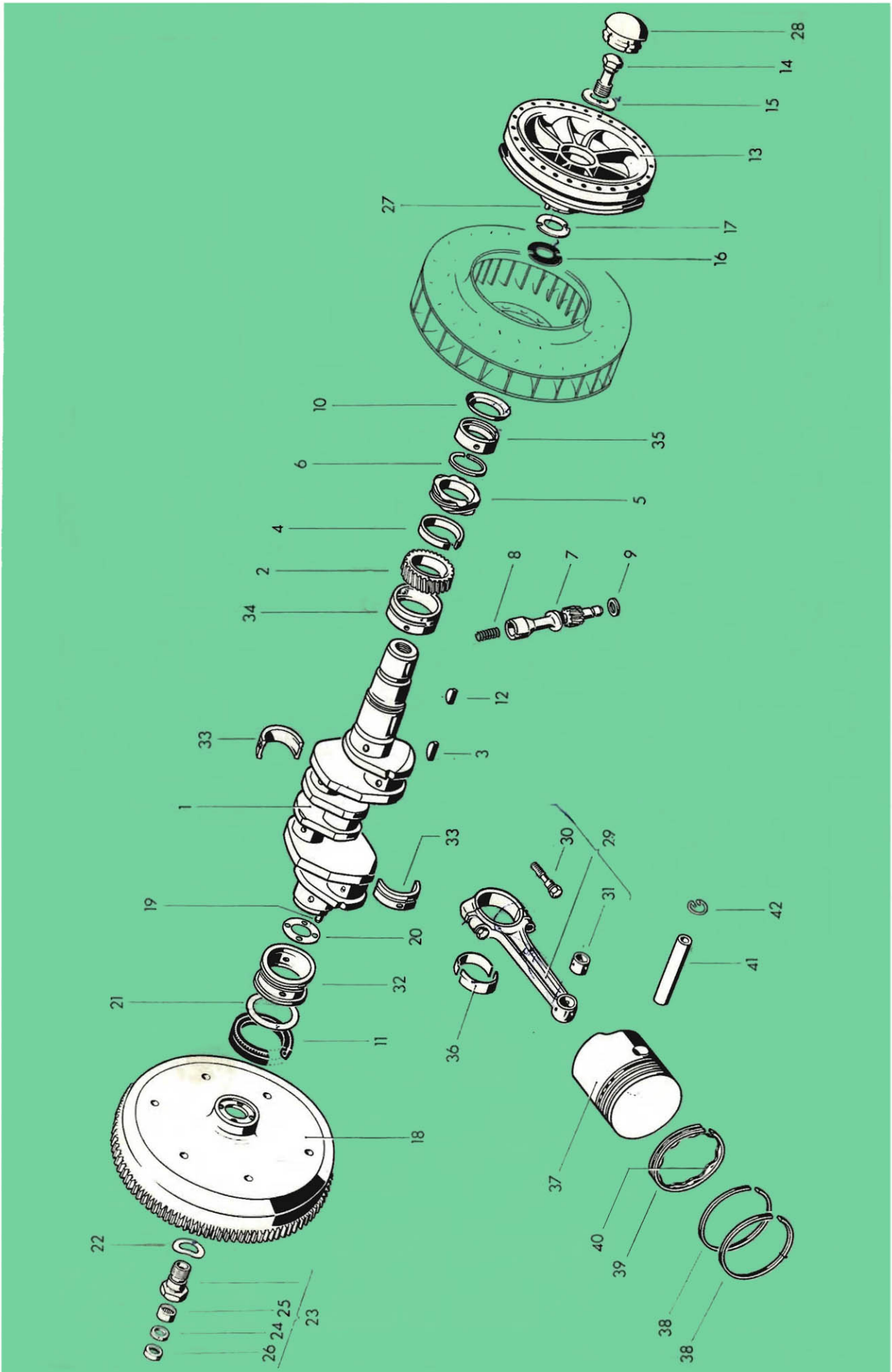


Illustration 2

Key No.	Part No.	Description	Quantity	Type and model
<b>CRANKSHAFT</b>				
1	311 105 101 B	Crankshaft .....	1	
2	113 105 209	Timing gear – Crankshaft .....	1	
3	111 105 213	Woodruff key – Crankshaft timing gear .....	1	
4	113 105 219	Spacer – Crankshaft timing gear .....	1	
5	111 105 223	Gear – Distributor drive .....	1	
6	111 105 227	Lockring – Distributor drive gear .....	1	
7	113 105 231	Pinion – Distributor drive .....	1	
8	111 105 233	Coil spring – Distributor drive pinion .....	1	
9	113 105 235 A	Washer 6.3 mm – .....	1	
		Distributor drive pinion		
10	113 105 241 A	Oil thrower – Crankshaft .....	1	
11	113 105 245 B	Oil seal, 90 mm dia. – Crankshaft .....	1	
12	113 105 249	Woodruff key – Crankshaft pulley .....	1	
11/63	13	311 105 251 D Pulley – Crankshaft .....	1	
		(use 311 903 137 A up to Engine No. 141 840)		
14	311 105 263	Bolt – Crankshaft pulley .....	1	
15	111 105 265	Spring washer – Crankshaft pulley bolt .....	1	
16	311 105 267 A	Seal – Crankshaft pulley .....	1	
17	311 105 269 A	Shim – Crankshaft pulley .....	x	
3/62	18	113 105 271 B Flywheel – Clutch 180 .....	1	
		up to Engine No. 65 745		
7/62	–	211 105 271 Flywheel – Clutch 200 .....	1	
		from Engine No. 65 746		
19	113 105 277	Dowel pin – Flywheel .....	4	

735 316 20

Printed in Germany

Type 3 Supplement 15/63

Key No.	Part No.	Description	Quantity	Type and model
20	113 105 279	Gasket (paper) – Flywheel .....	1	
3/62	– 113 105 279 A	Gasket (metal) – .....	1	
		Flywheels 113 105 271 B/211 105 271		
21	113 105 281	Spacer 0.24 mm – Flywheel .....	×	
–	113 105 283	Spacer 0.30 mm – Flywheel .....	×	
–	113 105 285	Spacer 0.32 mm – Flywheel .....	×	
–	113 105 287	Spacer 0.34 mm – Flywheel .....	×	
–	113 105 289	Spacer 0.36 mm – Flywheel .....	×	
22	111 105 297	Lock washer – Flywheel .....	1	
23	111 105 305 C	Gland nut with needle bearing – Flywheel .....	1	
24	111 105 311	Gasket – Needle bearing .....	1	
25	111 105 313 A	Needle bearing – Flywheel gland nut .....	1	
26	111 105 315	Sealing ring – Needle bearing .....	1	
27	311 105 363	Dowel pin – Crankshaft pulley .....	1	
28	311 105 383	Cap – Crankshaft pulley .....	1	
<b>CONNECTING ROD</b>				
15/63	29	<b>311 105 401AB</b> Connecting rod (brown) .....	4	
15/63	–	311 105 401AG Connecting rod (grey) .....	4	
30	113 105 425	Bolt – Connecting rod .....	8	
31	311 105 431	Bush – Piston pin .....	4	
<b>CRANKSHAFT BEARINGS</b>				
32	<b>113 105 501 B</b>	<b>Crankshaft bearing No. 1, outer dia. 65.0 mm</b> .....	1	

Key No.	Part No.	Description	Quantity	Type and model
-	113 105 507 C	Bearing shell No. 1 (steel-backed) – Crankshaft .. (0.25 mm u.s.)	2	
-	113 105 513 C	Bearing shell No. 1 (steel-backed) – Crankshaft .. (0.50 mm u.s.)	2	
-	113 105 519 C	Bearing shell No. 1 (steel-backed) – Crankshaft .. (0.75 mm u.s.)	2	
5/62	33 113 105 531 D	<b>Bearing shell No. 2 – Crankshaft</b> .....	2	
-	113 105 531 C	Bearing shell No. 2 and No. 3 (steel-backed) – ... Crankshaft	4	
-	113 105 537 C	Bearing shell No. 2 and No. 3 (steel-backed) – .. Crankshaft (0.25 mm u.s.)	4	
-	113 105 543 C	Bearing shell No. 2 and No. 3 (steel-backed) – .. Crankshaft (0.50 mm u.s.)	4	
-	113 105 549 C	Bearing shell No. 2 and No. 3 (steel-backed) – .. Crankshaft (0.75 mm u.s.)	4	
34	113 105 561	<b>Bearing No. 3 – Crankshaft</b> .....	1	
35	113 105 591 A	<b>Bearing No. 4 – Crankshaft</b> .....	1	
-	113 105 597	Bearing No. 4 – Crankshaft (0.25 mm u.s.) .....	1	
-	113 105 603	Bearing No. 4 – Crankshaft (0.50 mm u.s.) .....	1	
-	113 105 609	Bearing No. 4 – Crankshaft (0.75 mm u.s.) .....	1	
36	113 105 701	<b>Bearing shell – Connecting rod</b> .....	8	
-	113 105 707	Bearing shell (0.25 mm u.s.) – Connecting rod ...	8	
-	113 105 713	Bearing shell (0.50 mm u.s.) – Connecting rod ...	8	
-	113 105 719	Bearing shell (0.75 mm u.s.) – Connecting rod ...	8	

735 308 20

Printed in Germany

Mag 7/62

Typ 3

Key No.	Part No.	Description	Quantity	Type and model
13/63	-	113 105 507 A Crankshaft bearing No. 1, outer dia. 65.0 mm . . . . (0.25 mm u.s.)	1	
13/63	-	113 105 513 A Crankshaft bearing No. 1, outer dia. 65.0 mm . . . . (0.50 mm u.s.)	1	
13/63	-	113 105 519 A Crankshaft bearing No. 1, outer dia. 65.0 mm . . . . (0.75 mm u.s.)	1	
33	<b>113 105 531 D</b>	<b>Crankshaft bearing shell No. 2, outer dia. 65.0 mm</b>	2	
13/63	-	113 105 537 D Crankshaft bearing shell No. 2, outer dia. 65.0 mm (0.25 mm u.s.)	2	
13/63	-	113 105 543 D Crankshaft bearing shell No. 2, outer dia. 65.0 mm (0.50 mm u.s.)	2	
13/63	-	113 105 549 D Crankshaft bearing shell No. 2, outer dia. 65.0 mm (0.75 mm u.s.)	2	
34	<b>113 105 561</b>	<b>Crankshaft bearing No. 3, outer dia. 65.0 mm . . . .</b>	1	
13/63	-	113 105 567 Crankshaft bearing No. 3, outer dia. 65.0 mm . . . . (0.25 mm u.s.)	1	
13/63	-	113 105 573 Crankshaft bearing No. 3, outer dia. 65.0 mm . . . . (0.50 mm u.s.)	1	
13/63	-	113 105 579 Crankshaft bearing No. 3, outer dia. 65.0 mm . . . . (0.75 mm u.s.)	1	
35	<b>113 105 591 A</b>	<b>Crankshaft bearing No. 4, outer dia. 50.0 mm . . . .</b>	1	
	-	113 105 597 Crankshaft bearing No. 4, outer dia. 50.0 mm . . . . (0.25 mm u.s.)	1	
	-	113 105 603 Crankshaft bearing No. 4, outer dia. 50.0 mm . . . . (0.50 mm u.s.)	1	
	-	113 105 609 Crankshaft bearing No. 4, outer dia. 50.0 mm . . . . (0.75 mm u.s.)	1	
36	<b>113 105 701</b>	<b>Bearing shell - Connecting rod . . . . .</b>	8	
	-	113 105 707 Bearing shell (0.25 mm u.s.) - Connecting rod . . .	8	
	-	113 105 713 Bearing shell (0.50 mm u.s.) - Connecting rod . . .	8	
	-	113 105 719 Bearing shell (0.75 mm u.s.) - Connecting rod . . .	8	

735 314 20

Printed in German

lement 13/63

Type 2

Key No.	Part No.	Description	Quantity	Type and model
<b>PISTON</b>				
7/62	37	<b>311 107 101CB</b> Piston 83 mm dia. (blue) .....	4	
7/62	-	311 107 101CR Piston 83 mm dia. (pink) .....	4	
7/62	-	311 107 101CG Piston 83 mm dia. (green) .....	4	
		up to Engine No. 65 745		
7/62	-	311 107 101 FB Piston 83 mm dia. (blue) .....	4	
7/62	-	311 107 101 FR Piston 83 mm dia. (pink) .....	4	
7/62	-	311 107 101 FG Piston 83 mm dia. (green) .....	4	
		from Engine No. 65 746 up to 164 420		
13/63	-	311 107 101 JB Piston 83 mm dia. (blue) .....	4	
13/63	-	311 107 101 JR Piston 83 mm dia. (pink) .....	4	
13/63	-	311 107 101 JG Piston 83 mm dia. (green) .....	4	
		from Engine No. 164 421		
	-	311 107 105 OB Piston 83.5 mm dia. (blue) .....	4	
	-	311 107 105 OR Piston 83.5 mm dia. (pink) .....	4	
	-	311 107 105 OG Piston 83.5 mm dia. (green) .....	4	
		up to Engine No. 65 745		
7/62	-	311 107 105 FB Piston 83.5 mm dia. (blue) .....	4	
7/62	-	311 107 105 FR Piston 83.5 mm dia. (pink) .....	4	
7/62	-	311 107 105 FG Piston 83.5 mm dia. (green) .....	4	
		from Engine No. 65 746 up to 164 420		
13/63	-	311 107 105 JB Piston 83.5 mm dia. (blue) .....	4	
13/63	-	311 107 105 JR Piston 83.5 mm dia. (pink) .....	4	
13/63	-	311 107 105 JG Piston 83.5 mm dia. (green) .....	4	
		from Engine No. 164 421		
	-	311 107 109 OB Piston 84 mm dia. (blue) .....	4	
	-	311 107 109 OR Piston 84 mm dia. (pink) .....	4	
	-	311 107 109 OG Piston 84 mm dia. (green) .....	4	
		up to Engine No. 65 745		
7/62	-	311 107 109 FB Piston 84 mm dia. (blue) .....	4	
7/62	-	311 107 109 FR Piston 84 mm dia. (pink) .....	4	
7/62	-	311 107 109 FG Piston 84 mm dia. (green) .....	4	
		from Engine No. 65 746 up to 164 420		
13/63	-	311 107 109 JB Piston 84 mm dia. (blue) .....	4	
13/63	-	311 107 109 JR Piston 84 mm dia. (pink) .....	4	
13/63	-	311 107 109 JG Piston 84 mm dia. (green) .....	4	
		from Engine No. 164 421		
13/63	38	311 107 301 A Piston ring 83 mm dia. ....	8	
	-	311 107 305 Piston ring 83.5 mm dia. ....	8	
		up to Engine No. 164 420		
13/63	-	311 107 305 A Piston ring 83.5 mm dia. ....	8	
	-	311 107 309 Piston ring 84 mm dia. ....	8	
		up to Engine No. 164 420		



Key No.	Part No.	Description	Quantity	Type and model
13/63	- 311 107 309 A	Piston ring 84 mm dia. ....	8	
1/61	39 311 107 331 A	Scraper ring 83 mm dia. ....	4	
7/62	40 311 107 333 A	Expander spring ....	4	
	- 311 107 335	Scraper ring 83.5 mm dia. ....	4	
	- 311 107 339	Scraper ring 84 mm dia. ...	4	
41	311 107 411 0S	Piston pin (black) ....	4	
	- 311 107 411 0W	Piston pin (white) ....	4	
	- 311 107 431	Piston pin (oversize, marked green) ....	×	
42	N 12 276 1	Circlip A 22 DIN 73 123 – Piston pin ....	8	

735 314 20

Printed in Germany

lement 13/63

Type 3



**MAIN GROUP**



Key No.	Part No.	Description	Quantity	Type and model