



You can tell all your customers

that the Volkswagen factory keeps more than 2000 physicists, chemists, engineers, and inspectors constantly and carefully testing each individual part of a Volkswagen. It makes no difference whether the part is for a new car or for the VW Parts Service, nor whether we manufacture it or get it from a subcontractor.



Genuine VW Parts rigidly factory inspected

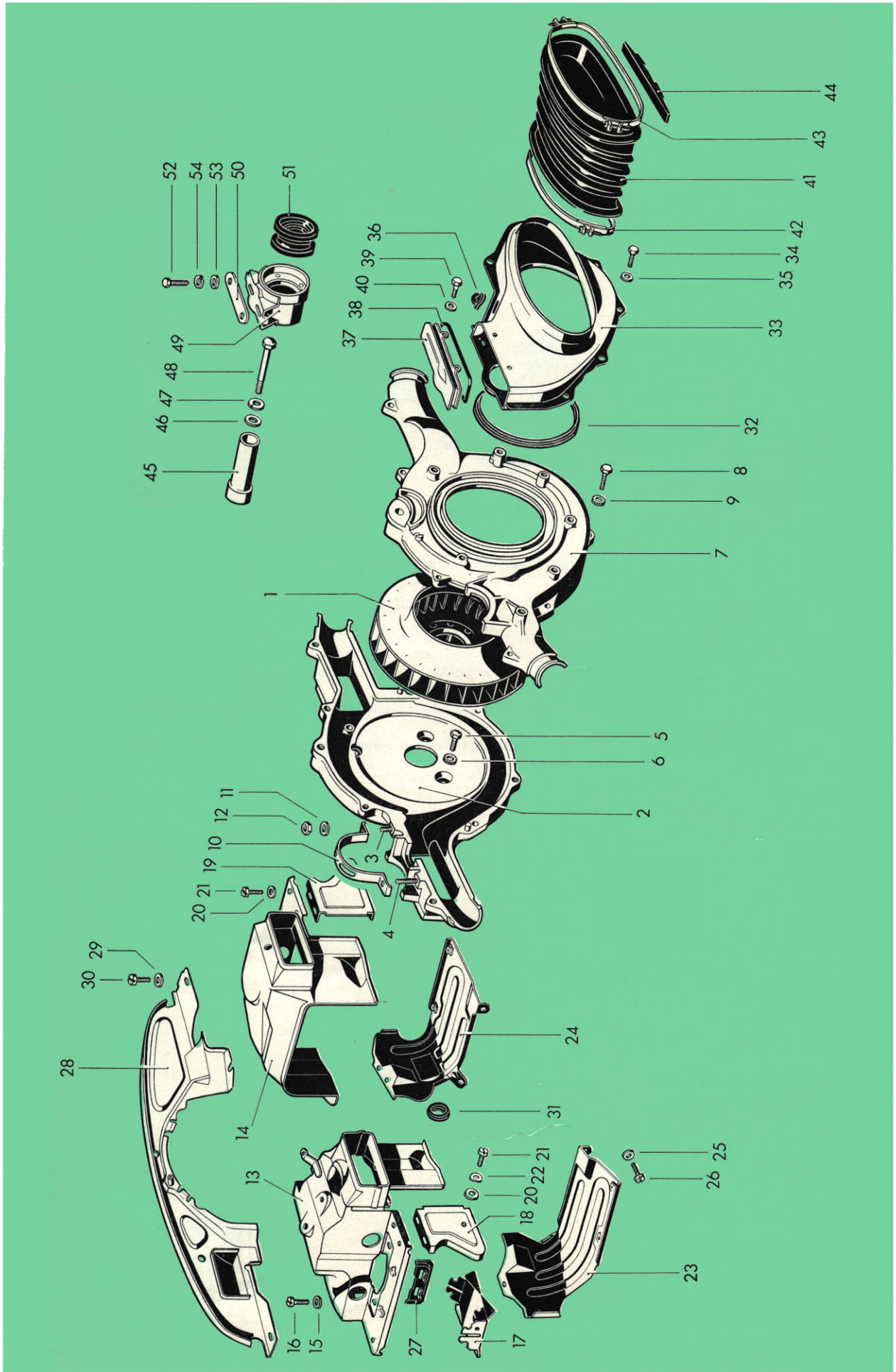


Illustration 5

Key No.	Part No.	Description	Quantity	Type and model
AIR COOLING				
5/62	1	311 119 105 E Fan	1	
	2	311 119 211 C Fan housing half, front	1	
	3	N 14 398 1 Stud AM 8 A×27 – Generator strap	1	
14/63	4	N 14 443 1 Stud AM 8 A×38 – Generator strap	1	
	5	N 10 215 4 Bolt, hex. head M 6×15 DIN 933 galvanized	4	
	6	N 12 127 2 Shake-proof washer A 6.4 DIN 6797 galvanized ..	4	
	7	311 119 225 C Fan housing half, rear	1	
	8	N 10 222 1 Bolt, hex. head M 6×22 DIN 933	8	
	9	N 12 127 2 Shake-proof washer A 6.4 DIN 6797 galvanized ..	8	
2/61	10	311 119 293 B Strap – Generator	1	
		(use N 14 395 3 up to Engine No. 1537)		
	11	N 11 526 2 Washer B 8.4 DIN 125 high-polish galvanized ...	2	
	12	N 11 008 3 Nut, hex. M 8 DIN 934 galvanized	2	
	-	311 119 303 A Cover plate – Cylinder, left	1	
		up to Engine No. 65 745		
14/63	13	311 119 303 E Cover plate – Cylinder, left	1	
		from Engine No. 65 746		
	-	311 119 304 A Cover plate – Cylinder, right	1	
		up to Engine No. 65 745		
14/63	14	311 119 304 E Cover plate – Cylinder, right	1	
		from Engine No. 65 746		
	15	N 11 652 1 Washer 7 galvanized	7	
	16	N 10 710 1 Screw, cheese head AM 6×10 DIN 84 galvanized	7	
	17	311 119 317 Deflector plate	2	
	18	311 119 309 Protection plate on cylinder cover plate, left	1	
	19	311 119 310 Protection plate on cylinder cover plate, right ...	1	

795 315 20

Printed in Germany

Type 3 Supplement 14/63

Key No.	Part No.	Description	Quantity	Type and model
	N 11 652 1	Washer 7 galvanized	6	
	N 10 710 1	Screw, cheese head AM 6×10 DIN 84 galvanized	6	
5/62	N 12 226 2	Spring washer B 6 DIN 137 galvanized	2	
	311 119 335	Heater channel, lower, left	1	
	311 119 336	Heater channel, lower, right	1	
	N 11 652 1	Washer 7 galvanized	4	
	N 10 710 1	Screw, cheese head AM 6×10 DIN 84 galvanized	4	
7/62	311 119 349	Deflector plate – Oil cooler	1	
		from Engine No. 65 746		
7/62	311 119 513 A	Cover plate – Engine, front	1	
	N 11 652 1	Washer 7 galvanized	2	
	N 10 710 1	Screw, cheese head AM 6×10 DIN 84 galvanized	2	
	113 119 571	Grommet – Carburetor pre-heating connection pipe up to Engine No. 33 980	1	
5/62	–	113 119 581 Plug for opening 38 mm dia. in heater channel, .. lower, right	×	
	311 119 599 A	Seal – Cooling air intake housing	1	
	311 119 603 A	Intake housing – Cooling air	1	
	N 10 210 1	Bolt, hex. head M 6×10 DIN 933 galvanized	7	
	N 12 226 2	Spring washer B 6 DIN 137 galvanized	7	
	311 119 619 A	Plug for inspection hole in intake housing	1	
	311 119 639 A	Cover – Intake housing	1	
	311 119 655 B	Gasket – Cover	1	

Key No.	Part No.	Description	Quantity	Type and model
39	N 10 210 1	Bolt, hex. head M 6×10 DIN 933 galvanized ...	3	
40	N 12 226 2	Spring washer B 6 DIN 137 galvanized	3	
41	311 119 665 A	Bellows – Cooling air intake housing	1	
42	311 119 671	Hose clip, small – Bellows	1	
43	311 119 675	Hose clip, large – Bellows	1	
2/61 44	311 119 681	Rubber packing – Bellows	2	
ENGINE MOUNTING, REAR				
45	311 199 021	Tube – Engine mounting, rear	1	
46	311 199 125	Washer – Tube	1	
2/61 47	N 12 009 1	Lock washer A 8 DIN 127	1	
48	N 10 390 1	Bolt, hex. head BM 8×95 DIN 931	1	
49	311 199 131	Housing – Engine mounting, rear	1	
50	311 199 143	Packing – Housing	×	
51	311 199 145	Rubber mounting	1	
52	N 10 241 1	Bolt, hex. head M 8×22 DIN 933 galvanized	×	
-	N 10 335 1	Bolt, hex. head M 8×35 DIN 931	×	
53	N 11 670 1	Washer 8.1	2	
54	N 12 009 1	Lock washer A 8 DIN 127	2	

MAIN GROUP



Key No.	Part No.	Description	Quantity	Type and model

