

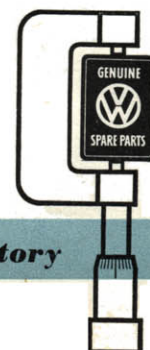


What's the name of that artist fellow with the beard?

Yes, just what was his name? What do you do if you can't remember the name?

All you do know is that he's an artist.

You greet him warmly, ask, perhaps, how life is treating him and tactfully ask his name again for you can scarcely say "Good Day, Mr. Artist, Sir". This time – make sure you get the name and don't forget it.



Genuine VW Parts rigidly factory

inspected

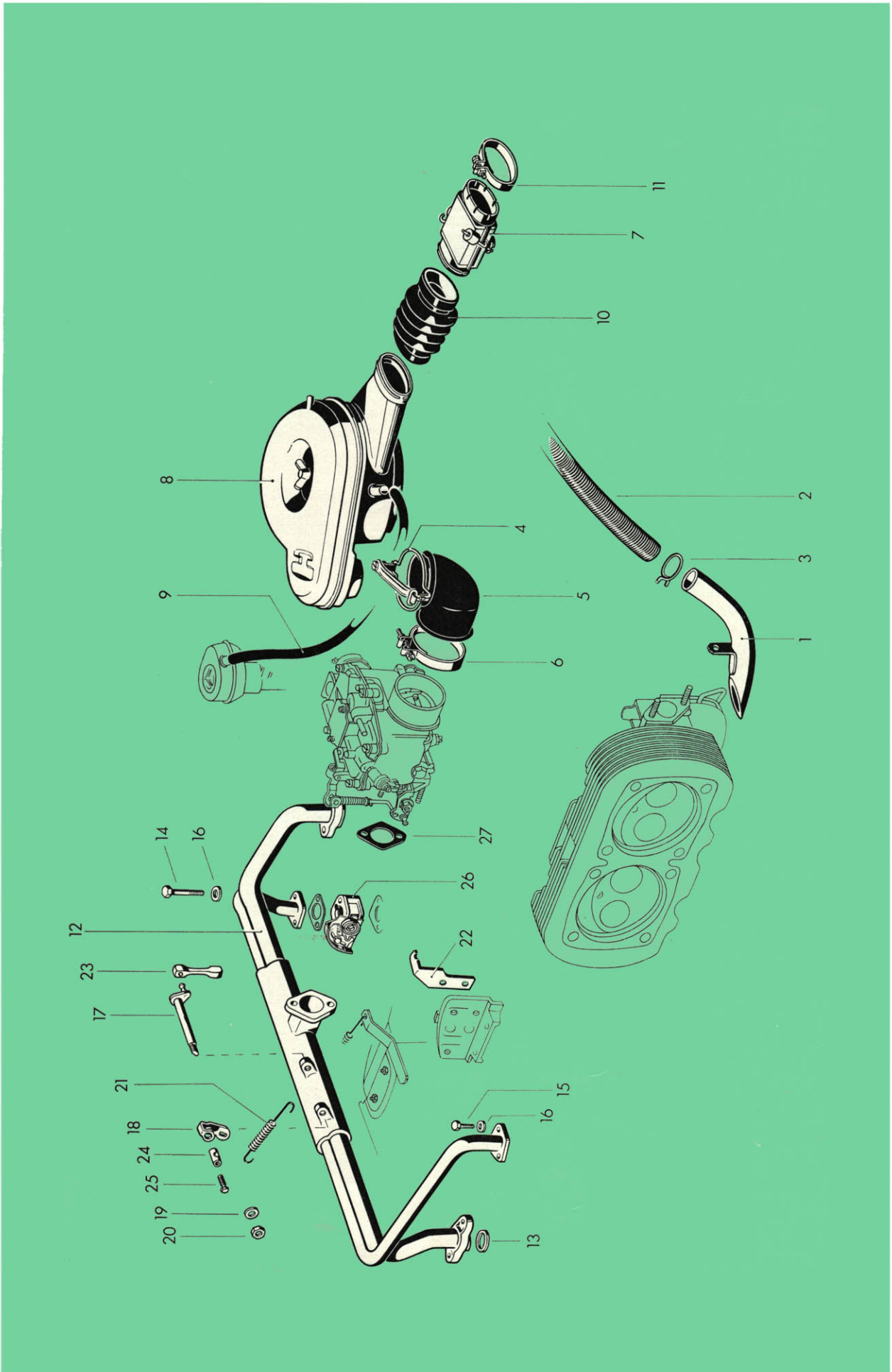


Illustration 8

| Key No. | Part No. | Description | Quantity | Type and model |
|------------------------|----------|---|----------|----------------|
| INTAKE MANIFOLD | | | | |
| 6/62 | 1 | 311 129 511 Adapter pipe – Carburetor pre-heating | 1 | |
| 6/62 | 2 | 113 255 359 Connection pipe – Carburetor pre-heating | 1 | |
| | | (shorten to 270 mm) | | |
| 6/62 | 3 | 113 255 737 Clip – Connection pipe | 2 | |
| 6/62 | 4 | 311 129 561 Retainer – Elbow | 1 | |
| 2/61 | 5 | 311 129 581 B Elbow – Carburetor | 1 | |
| 2/61 | - | 311 129 597 Retainer – Elbow | 1 | |
| | 6 | 311 255 351 Clip – Elbow | 1 | |
| 2/61 | 7 | 311 129 609 B Control box – Carburetor pre-heating | 1 | |
| 2/61 | 8 | 311 129 611 B Air cleaner | 1 | |
| 11/63 | - | 311 129 641 Wing screw M 6×90 – Air cleaner | 1 | |
| 11/63 | - | N 11 524 1 Washer A 6.4 DIN 125 | 1 | |
| | 9 | 211 129 653 A Hose – Crankcase ventilation | 1 | |
| | 10 | 311 129 695 A Boot – Air cleaner | 1 | |
| | 11 | 311 129 699 Clip – Control box | 2 | |
| 7/62 | - | 311 129 701 Intake manifold and pre-heating pipe | 1 | |
| | | up to Engine No. 65 745 | | |
| | - | N 13 823 1 Sealing washer C 28×34 DIN 7603 | 2 | |
| | | up to Engine No. 65 745 | | |
| 7/62 | 12 | 311 129 701 A Intake manifold and pre-heating pipe | 1 | |
| | | from Engine No. 65 746 | | |
| 7/62 | 13 | 311 129 707 Gasket 32×38 – Intake manifold | 2 | |
| | | from Engine No. 65 746 | | |
| | 14 | N 10 349 1 Bolt, hex. head BM 6×45 DIN 931 | 2 | |
| | 15 | N 10 215 4 Bolt, hex. head M 6×15 DIN 933 galvanized | 2 | |
| | 16 | N 12 226 2 Spring washer B 6 DIN 137 galvanized | 4 | |
| | 17 | 311 129 761 Carburetor relay shaft on intake manifold | 1 | |
| | | up to Engine No. 260 978 | | |

| Key No. | Part No. | Description | Quantity | Type and model |
|---------|----------|---|----------|----------------|
| 6/62 | 18 | 311 129 767 A Lever – Relay shaft up to Engine No. 260 978 (up to Chassis No. 44 931 also use 311 721 509 for LHD vehicles and 312 721 545 A for RHD vehicles) | 1 | |
| | 19 | N 12 229 1 Spring washer A 8 DIN 137 galvanized | 1 | |
| | 20 | N 11 008 3 Nut, hex. M 8 DIN 934 galvanized | 1 | |
| | 21 | 311 129 769 A Return spring – Relay shaft | 1 | |
| | 22 | 311 129 771 A Bracket – Return spring up to Engine No. 65 745 | 1 | |
| 6/62 | 23 | 311 129 773 A Link – Relay shaft to carburetor | 1 | |
| | 24 | 311 129 777 Swivel pin rear – Accelerator cable | 1 | |
| 15/63 | – | N 11 558 1 Washer 8.4 DIN 433 | 1 | |
| | 25 | 311 129 779 A Bolt, hex. head M 5×10 – Swivel pin | 1 | |
| 7/62 | 26 | 311 129 781 B Valve – Pre-heating pipe | 1 | |
| | – | 311 129 783 A Intermediate flange – Pre-heating pipe up to Engine No. 65 745 | 1 | |
| | 27 | 311 129 799 Gasket – Carburetor flange | 1 | |
| 15/63 | – | 311 129 933 Relay shaft on intake manifold from Engine No. 260 979 | 1 | |
| 15/63 | – | 311 129 937 Lever with ball from Engine No. 260 979 | 1 | |
| 15/63 | – | N 12 229 1 Spring washer A 8 DIN 137 galvanized | 1 | |
| 15/63 | – | N 11 008 3 Nut, hex. M 8 DIN 934 galvanized | 1 | |
| 15/63 | – | 311 129 941 Lever – Relay shaft from Engine No. 260 979 | 1 | |
| 15/63 | – | N 11 533 1 Washer A 7.4 DIN 125 | 1 | |
| 15/63 | – | N 12 434 1 Lock washer 4 DIN 6799 | 1 | |
| 15/63 | – | 311 129 953 Pin – Lever from Engine No. 260 979 | 1 | |
| 15/63 | – | N 12 228 2 Spring washer B 8 DIN 137 galvanized | 2 | |
| 15/63 | – | N 11 008 3 Nut, hex. M 8 DIN 934 galvanized | 1 | |