

MAIN GROUP

3

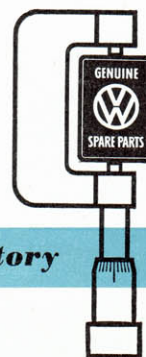
TRANSMISSION

	Illustration
01 Transmission case	13
11 Gears, shafts	14



What would you say

if the back of the counter or the stockroom of an auto
supply shop looked like this?



Genuine VW Parts rigidly factory inspected

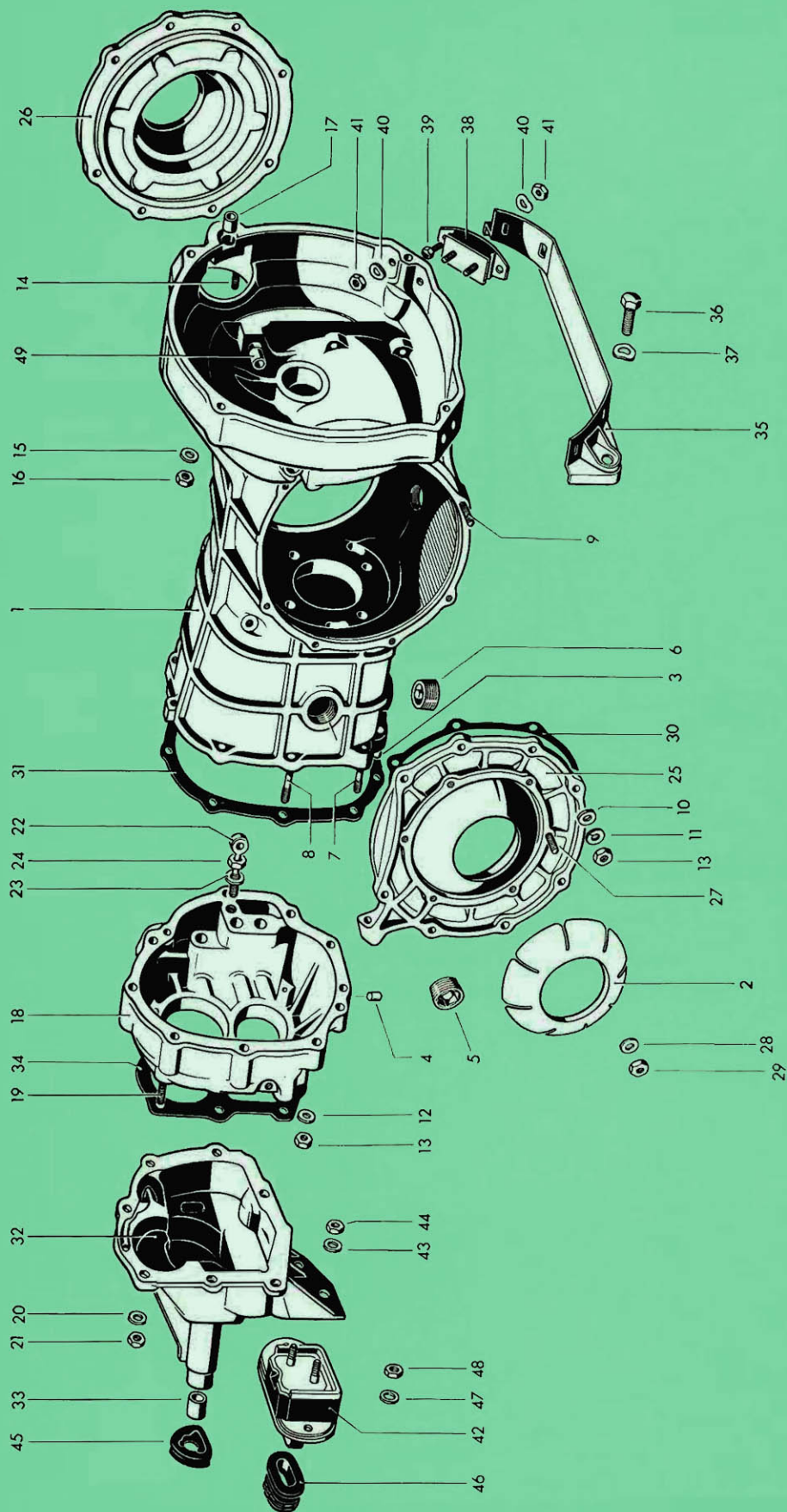


illustration 13

Key No.	Part No.	Description	Quantity	Type and model
TRANSMISSION				
-	311 300 039	Transmission assy.	1	
TRANSMISSION CASE				
1	113 301 051 C	Transmission case	1	
2	113 301 111	Plastic packing between final drive cover and rear axle tube	2	
3	113 301 113	Dowel pin - Gear carrier	2	
4	111 301 115	Retaining plug	1	
5	111 301 127 C	Oil filler plug M 24×1.5	1	
-	111 301 129 A	Oil filler plug M 24.5×1.5 (oversize)	×	
6	113 301 141	Oil drain plug M 24×1.5 - Magnetic	2	
-	113 301 143	Oil drain plug M 24.5×1.5 - Magnetic (oversize)	×	
7	N 14 396 1	Stud AM 8 A×50 - Gear carrier	4	
8	N 14 407 1	Stud AM 8 A×62 - Gear carrier	5	
15/63	9	N 14 395 3 Stud AM 8 A×42 - Final drive cover	16	
12/63	10	N 11 558 1 Washer 8.4 DIN 433	16	
12/63	11	N 12 038 1 Lock washer 8	16	
12	N 12 241 2	Spring washer B 8×15 DIN 137 galvanized	9	
13	N 11 008 5	Nut, hex. M 8 DIN 934	25	
14	N 14 459 1	Stud BM 10 A×45 - Starting motor	1	
15	N 12 230 2	Spring washer B 10 DIN 137 galvanized	1	
16	N 11 010 2	Nut, hex. M 10 DIN 934 galvanized	1	
17	111 301 155	Bush - Starting motor shaft	1	
18	113 301 169	Gear carrier	1	
19	N 14 449 1	Stud AM 7 A×32 - Gearshift housing	7	

735 316 20

Printed in Germany

Type 3 Supplement 15/63

Key No.	Part No.	Description	Quantity	Type and model
20	N 12 234 1	Spring washer B 7 DIN 137	7	
21	N 11 007 1	Nut, hex. M 7 DIN 934	7	
22	113 301 177	Support – Reverse lever	1	
23	N 12 242 1	Spring washer B 10×18 DIN 137	1	
24	N 11 134 2	Nut, hex. M 10 DIN 70 616	1	
25	113 301 179 A	Final drive cover, left	1	
26	113 301 180 A	Final drive cover, right	1	
27	N 14 398 1	Stud AM 8 A×27 – Axle tube retainer	12	
28	N 12 241 2	Spring washer B 8×15 DIN 137 galvanized	12	
29	N 11 008 5	Nut, hex. M 8 DIN 934	12	
30	113 301 185	Gasket – Final drive cover	2	
31	113 301 191	Gasket – Gear carrier	1	
15/63 32	113 301 205 E	Gearshift housing	1	
33	111 301 207	Bush – Gearshift housing	2	
34	211 301 215	Gasket – Gearshift housing	1	
35	111 301 255 A	Transmission carrier	1	
36	111 301 257	Bolt – Transmission carrier	2	
37	N 12 240 1	Spring washer B 20 DIN 137	2	
38	111 301 263 B	Bonded rubber mounting, rear	2	
39	N 10 238 3	Bolt, hex. head M 8×15 DIN 933 galvanized	4	

Key No.	Part No.	Description	Quantity	Type and model
40	N 12 241 2	Spring washer B 8×15 DIN 137 galvanized	8	
41	N 11 008 5	Nut, hex. M 8 DIN 934	8	
42	311 301 265	Bonded rubber mounting, front	1	
43	N 12 242 1	Spring washer B 10×18 DIN 137	2	
44	N 11 134 2	Nut, hex. M 10 DIN 70 616	2	
2/61 45	111 301 289 B	Gasket between gearshift housing and frame	1	
46	311 301 343	Rubber bush – Bonded rubber mounting, front . .	1	
47	N 12 230 2	Spring washer B 10 DIN 137 galvanized	2	
1/61 48	N 11 010 4	Nut, hex. M 10 DIN 934 galvanized	2	
49	113 141 711	Bush, right – Operating shaft	1	

735 313 20

Printed in Germany

Type 3 Supplement 12/63

Key No.	Part No.	Description	Quantity	Type and model