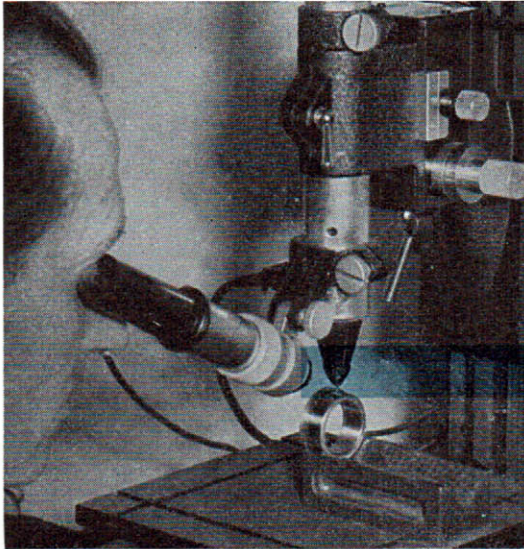


MAIN GROUP



FRONT AXLE STEERING

	Illustration
01 Front axle beam	15
05 Front suspension	15
11 Torsion bars	15
13 Shock absorber, front	15
15 Steering	16



The pitiless eye

Genuine VW Spare Parts are tested without fear or favor. A reject on the scrap heap comes cheaper than a dissatisfied VW driver.



Genuine VW Parts rigidly factory inspected

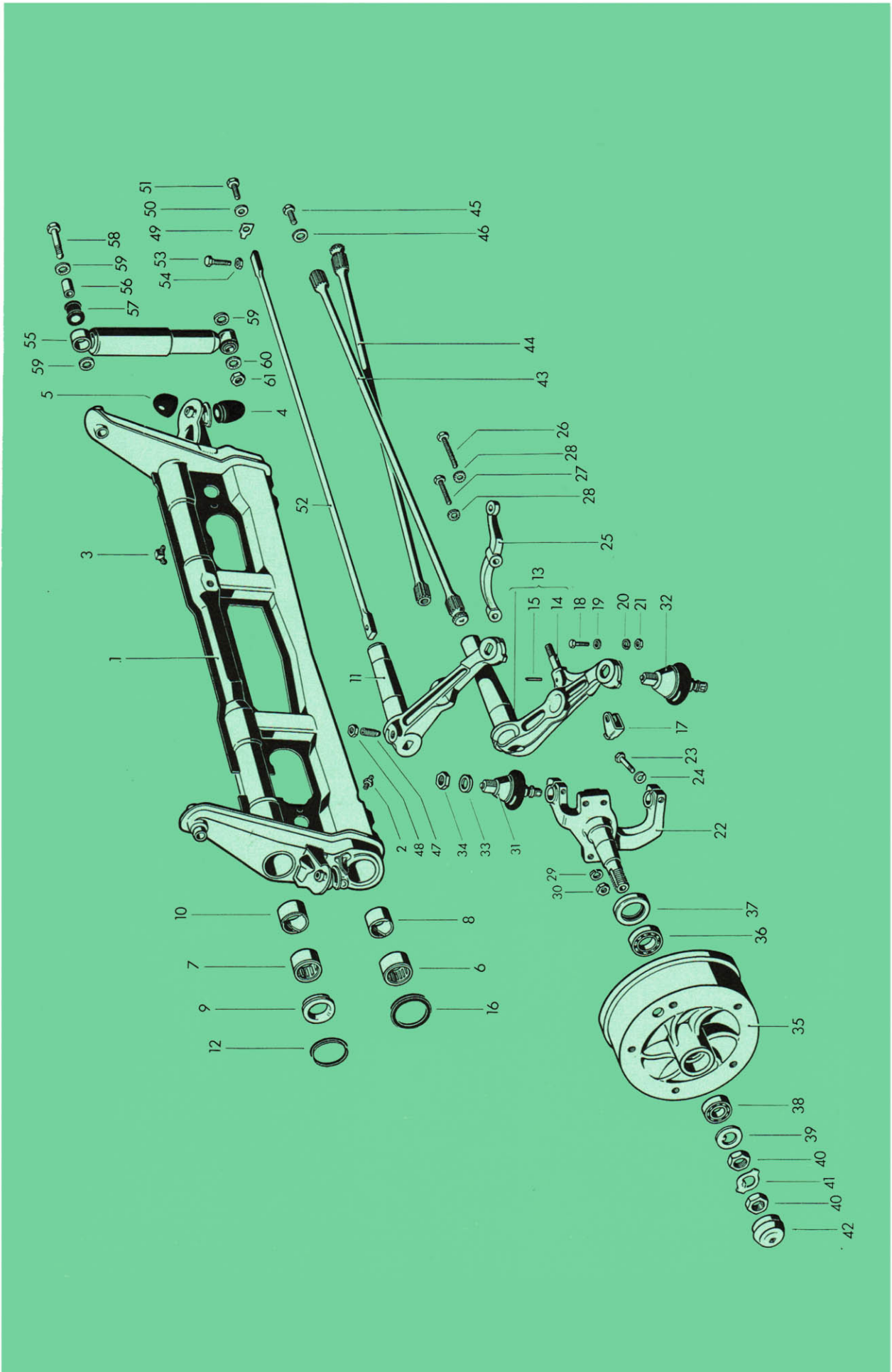


illustration 15

Key No.	Part No.	Description	Quantity	Type and model
FRONT AXLE				
11/63	- 311 400 025 B	Front axle (LHD) (in the case of types 361, 363 except M 267 replace 311 411 309 by 361 411 309)	1	311, 313, 351, 361, 363
11/63	- 312 400 025 B	Front axle (RHD) (in the case of types 362, 364 except M 267 replace 311 411 309 by 361 411 309)	1	312, 314, 352, 362, 364
11/63	- 341 400 025 B	Front axle	1	341, 343, 345
FRONT AXLE BEAM				
11/63	1 311 401 021 A	Front axle beam (LHD) (use 311 405 151 A/152 A as well up to Chassis No. 127 587)	1	
11/63	- 312 401 021 A	Front axle beam (RHD) (use 311 405 151 A/152 A as well up to Chassis No. 127 587)	1	
2	N 18 515 1	Grease nipple A 6	2	
3	N 18 523 1	Grease nipple B 6	2	
4	311 401 273	Rubber stop - Torsion arm, lower	2	
5	311 401 275	Rubber stop - Torsion arm, upper	2	
-	311 401 301	Needle bearing (47.0 mm dia.) - Torsion arm, lower up to Chassis No. 127 587	2	
-	311 401 301 A	Needle bearing (47.2 mm dia.) - Torsion arm, lower up to Chassis No. 127 587	×	
11/63	6 311 401 301 C	Needle bearing (50.0 mm dia.) - Torsion arm, lower from Chassis No. 127 588	2	
11/63	- 311 401 301 D	Needle bearing (50.2 mm dia.) - Torsion arm, lower from Chassis No. 127 588	×	
11/63	- 311 401 303	Bush (47.0 mm dia.) - Torsion arm, lower (to be used when installing 311 405 151 A/152 A in front axle beam up to Chassis No. 127 587)	×	

Key No.	Part No.	Description	Quantity	Type and model
11/63	-	311 401 303 A Bush (47.2 mm dia.) – Torsion arm, lower (to be used when installing 311 405 151 A/152 A in front axle beam up to Chassis No. 127 587)	×	
	7	311 401 305 Needle bearing (44.0 mm dia.) – Torsion arm, .. upper	2	
	-	311 401 305 A Needle bearing (44.2 mm dia.) – Torsion arm, .. upper	×	
	8	311 401 311 Bush – Torsion arm, lower	2	
1/61	9	311 401 319 B Thrust ring (44.15 mm dia.) – Torsion arm, upper	2	
1/61	-	311 401 319 C Thrust ring (44.35 mm dia.) – Torsion arm, upper	×	
	10	311 401 323 Bush – Torsion arm, upper	2	
FRONT SUSPENSION				
	11	311 405 105 Torsion arm, upper, left	1	
	-	311 405 106 Torsion arm, upper, right	1	
	12	311 405 129 Seal – Torsion arm, upper	2	
11/63	13	311 405 151 A Torsion arm, lower	1	
		(use 311 401 303/311 401 303 A as well up to Chassis No. 127 587)		
11/63	-	311 405 152 A Torsion arm, lower	1	
		(use 311 401 303/311 401 303 A as well up to Chassis No. 127 587)		
	14	111 405 175 A Mounting bolt, lower – Shock absorber (oversize) .	×	
	15	N 12 825 1 Dowel pin grooved 4×25 DIN 1473	×	
	-	311 405 179 Seal 56 mm dia. – Torsion arm, lower	2	
		up to Chassis No. 127 587		
11/63	16	311 405 179 A Seal 59 mm dia. – Torsion arm, lower	2	
		from Chassis No. 127 588		
11/63	17	311 405 185 Stop – Steering knuckle	2	
11/63	18	N 10 335 1 Bolt, hex. head M 8×35 DIN 931	2	
11/63	19	N 11 670 1 Washer 8.1	2	
11/63	20	N 12 008 2 Lock washer B 8 DIN 127 galvanized	2	
11/63	21	N 11 008 5 Nut, hex. M 8 DIN 934	2	

Key No.	Part No.	Description	Quantity	Type and model
22	311 405 311	Steering knuckle, left	1	
-	311 405 312	Steering knuckle, right	1	
23	311 405 321	Bolt, hex. head M 8×40 – Ball joints, upper and lower	4	
24	N 12 009 1	Lock washer A 8 DIN 127	4	
25	311 405 325	Steering arm, left	1	
-	311 405 326	Steering arm, right	1	
26	311 405 341	Bolt, hex. head M 10×1×60	2	
27	311 405 343	Bolt, hex. head M 10×1×50	2	
28	N 12 110 1	Spring washer A 10.5 DIN 6798 galvanized	4	
11/63 29	N 12 010 2	Lock washer B 10 DIN 127 galvanized	4	
30	N 11 137 1	Nut, hex. M 10×1 DIN 70 615	4	
-	N 18 515 1	Grease nipple A 6 – Ball joints, upper and lower up to Chassis No. 167 880	4	
-	N 12 115 1	Spring washer A 19 DIN 6798 – Ball joints, upper and lower up to Chassis No. 167 880	4	
-	N 11 165 3	Nut, hex. M 18×1.5 DIN 936 – Ball joints, upper and lower up to Chassis No. 167 880	4	
11/63 31	311 405 361 A	Ball joint, upper	2	
11/63 32	311 405 371 A	Ball joint, lower	2	
11/63 33	N 12 240 1	Spring washer B 20 DIN 137	4	
		from Chassis No. 167 881		
11/63 34	N 11 166 1	Nut, hex. M 20×1.5 DIN 936	4	
		from Chassis No. 167 881		
-	311 405 375	Seal – Ball joint, lower	2	
		up to Chassis No. 167 880		
13/63 -	311 405 375 A	Seal – Ball joint, lower 311 405 371 A	2	
-	311 405 377	Seal – Ball joint, upper	2	
		up to Chassis No. 167 880		
13/63 -	311 405 377 A	Seal – Ball joint, upper 311 405 361 A	2	
13/63 -	311 405 387	Retaining ring – Seal 311 405 375 A/377 A	4	

735 314 20

Printed in Germany

lement 13/63

Type 3

Key No.	Part No.	Description	Quantity	Type and model
35	311 405 615	Brake drum, front	2	
36	311 405 625	Ball bearing, inner – Front wheel	2	
37	311 405 641	Oil seal – Front wheel bearing	2	
38	311 405 645	Ball bearing, outer – Front wheel	2	
39	311 405 661	Thrust washer – Front wheel bearing	2	
-	N 11 164 2	Nut, hex. M 16×1.5 DIN 936 – Steering knuckle ...	2	
40	N 11 164 3	Nut, hex. M 16×1.5 DIN 936	2	
		left-hand thread – Steering knuckle		
41	311 405 681	Lock plate – Nut, hex.	2	
42	311 405 691	Grease cap – Front wheel, left	1	
-	311 405 692	Grease cap – Front wheel, right	1	

Key No.	Part No.	Description	Quantity	Type and model	
TORSION BARS					
43	311 411 105	Torsion bar, left	1		
44	311 411 106	Torsion bar, right	1		
45	N 10 058 1	Bolt, hex. head M 10×15 DIN 70 614	2		
46	N 12 230 2	Spring washer B 10 DIN 137 galvanized	2		
47	111 411 151	Grub screw – Torsion bar and stabilizer mounting .	3		
48	111 411 155	Lock nut – Grub screw	3		
49	311 411 161	Lock plate	1		
50	N 11 670 1	Washer 8.1	1		
51	N 10 240 1	Bolt, hex. head M 8×20 DIN 933	1		
52	311 411 309	Stabilizer 11.0 mm dia.	1	311-314, 341, 343, 345, 351, 352, M 267, 361-364	
2/61	-	361 411 309	Stabilizer 13.7 mm dia.	1	361-364
53	N 10 062 2	Bolt, hex. head M 10×28 DIN 70 614	1		
54	N 11 134 2	Nut, hex. M 10 DIN 70 616	1		

Key No.	Part No.	Description	Quantity	Type and model
SHOCK ABSORBER FRONT				
55	311 413 031	Shock absorber, front	2	
-	311 413 031 A	Shock absorber, front	2	
56	111 413 371 A	Bush - Rubber grommet	4	
57	111 413 381 A	Grommet (rubber) - Shock absorber	4	
-	111 413 401 A	Bolt - Shock absorber	2	
		up to Chassis No. 64 915		
58	111 413 403 A	Bolt - Shock absorber	2	
		from Chassis No. 64 916		
59	N 12 112 1	Spring washer J 12.5 DIN 6798	6	
60	N 12 111 1	Spring washer J 10.5 DIN 6798	2	
61	N 11 010 2	Nut, hex. M 10 DIN 934 galvanized	2	