

MAIN GROUP

5

REAR AXLE

	Illustration
01 Rear axle	17 + A 17
11 Rear suspension	17
13 Shock absorber, rear	17
17 Differential	18



Another deal "down the drain"

because this man's VW was not ready in time. It was not the workshop's fault – the part was just not in stock. It won't be too long before another firm goes "down the drain". This time it'll be the one run by your boss. Can you guess why?



Genuine VW Parts rigidly factory

inspected

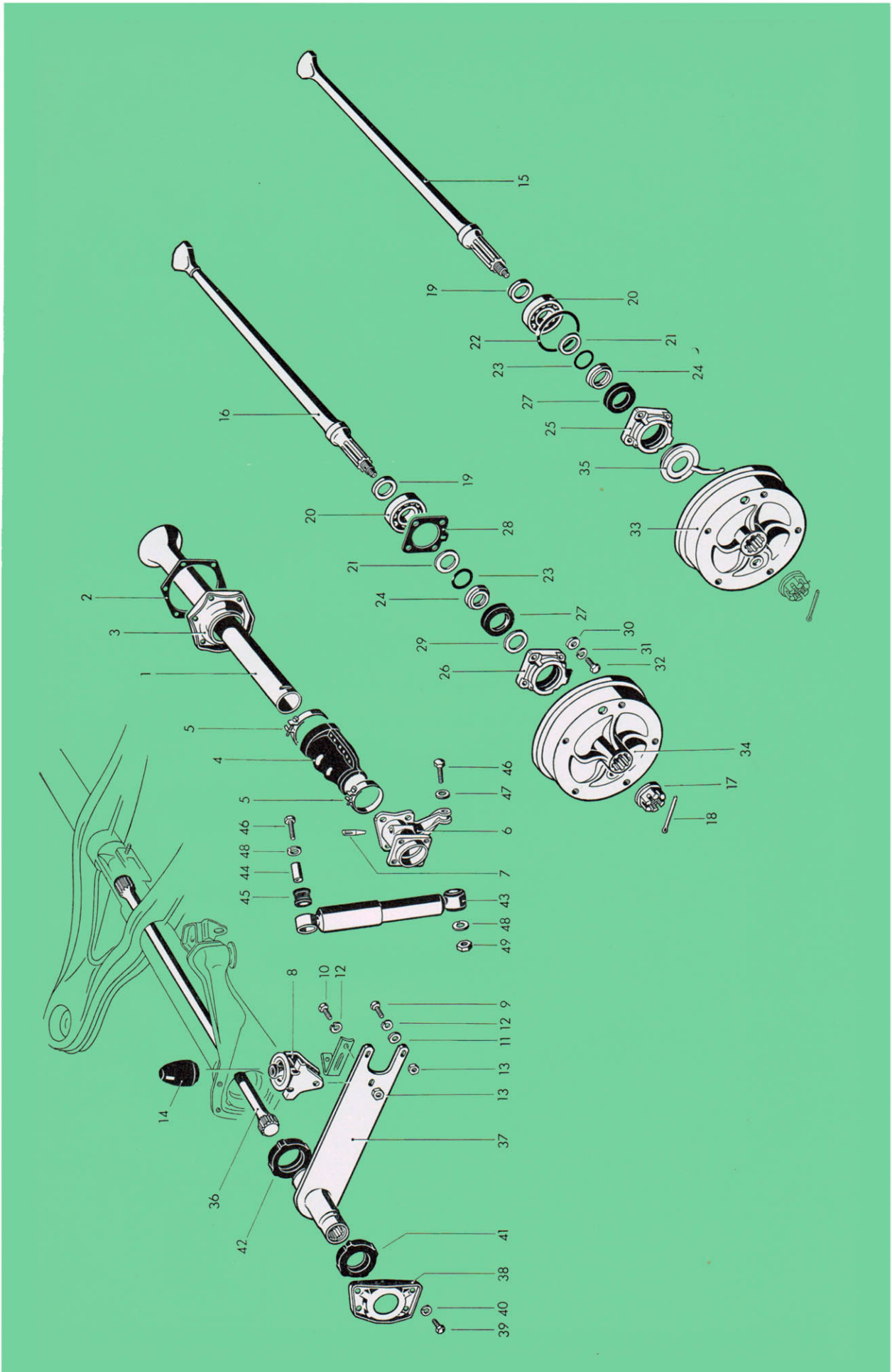
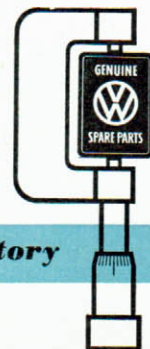


illustration 17



This is a hewe!!!

The unfortunate result of crossing a horse with a ewe. If you don't want to breed hewes – make sure that the breed remains pure. In terms of the VW that means – but we don't have to tell you that, do we!



Genuine VW Parts rigidly factory inspected

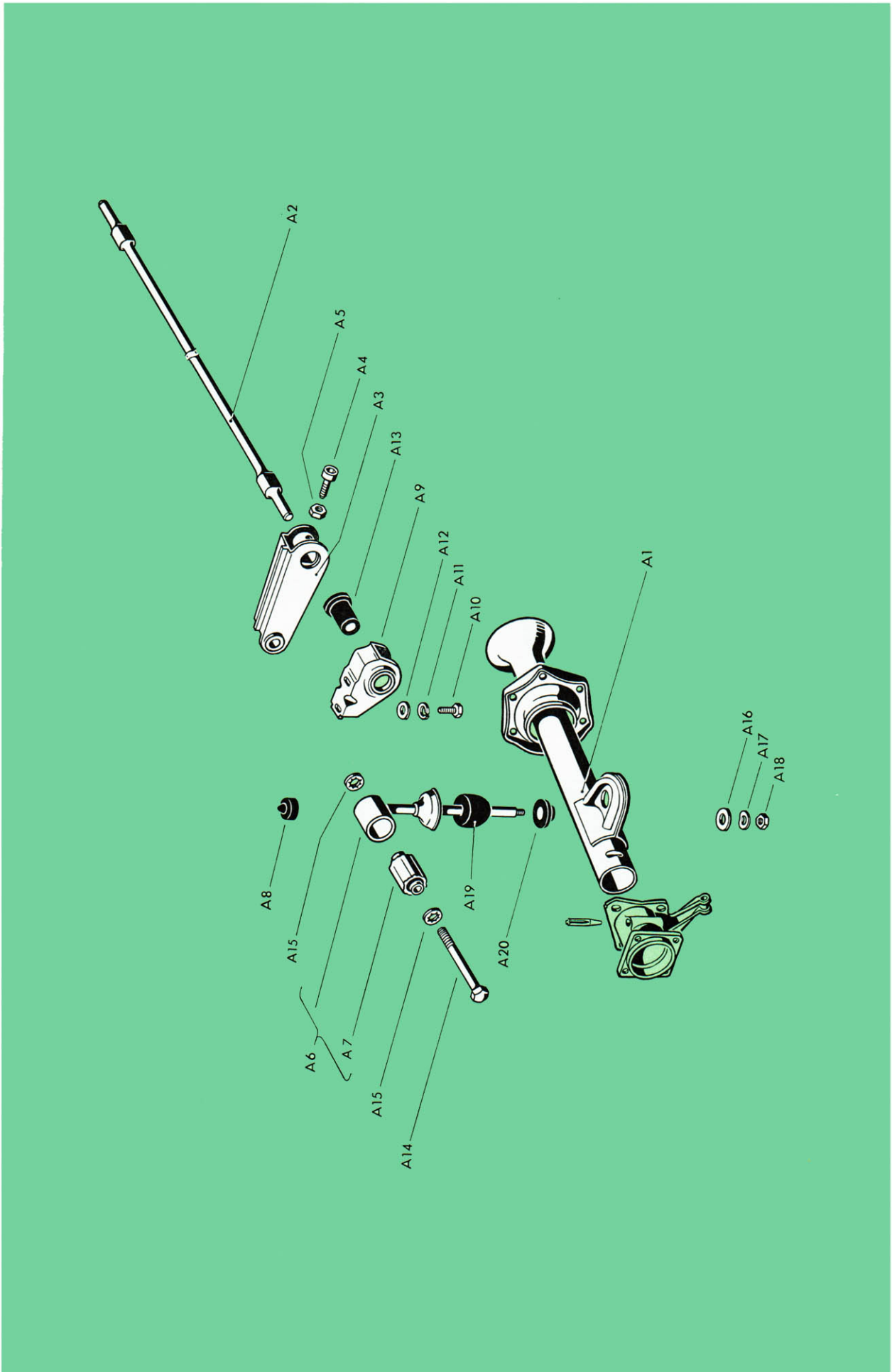


illustration **A17**

Key No.	Part No.	Description	Quantity	Type and model
REAR AXLE				
7/62	-	361 501 067 A	Rear axle tube, left with shock absorber bracket up to Chassis No. March 1963	1 M 267, 361-364
7/62	-	361 501 068 A	Rear axle tube, right with shock absorber bracket up to Chassis No. March 1963	1 M 267, 361-364
12/63	1	111 501 105	Tube - Rear axle	2
12/63	A 1	361 501 105	Tube - Rear axle, left	1 M 267, 361-364
12/63	-	361 501 106	Tube - Rear axle, right	1 M 267, 361-364
	2	111 501 131	Gasket 0.2 mm - Rear axle tube retainer	x
	-	111 501 133	Gasket 0.1 mm - Rear axle tube retainer	x
12/63	3	111 501 141	Retainer - Rear axle tube from Chassis No. March 1963	2
12/63	-	111 501 151	Dust sleeve - Rear axle tube from Chassis No. March 1963	2
12/63	-	111 501 157 B	Retaining clip 85-103 mm dia.	2
12/63	-	111 501 159 B	Retaining clip 44-64 mm dia.	2
	4	111 501 153 B	Dust sleeve - Rear axle tube (split type)	2
7/62	5	SP 118 A	1 set securing parts for dust sleeve 111 501 153 B	2
12/63	6	311 501 163	Bearing housing - Rear axle, left from Chassis No. March 1963	1
12/63	-	311 501 164	Bearing housing - Rear axle, right from Chassis No. March 1963	1
12/63	7	N 12 801 1	Dowel pin, self-locking 10x40 DIN 1472	2
12/63	8	361 501 189 A	Bumper stop for spring plate, left from Chassis No. March 1963	1
12/63	-	361 501 190 A	Bumper stop for spring plate, right from Chassis No. March 1963	1
12/63	9	N 10 127 1	Bolt, hex. head AM 12x1.5x30 DIN 960	4
12/63	10	N 10 137 1	Bolt, hex. head AM 12x1.5x35 DIN 960	2

Key No.	Part No.	Description	Quantity	Type and model
12/63	11	N 11 531 1 Washer A 13 DIN 125	4	
12/63	12	N 12 012 1 Lock washer B 12 DIN 127	6	
12/63	13	N 11 020 2 Nut, hex. M 12×1.5 DIN 934	6	
	14	311 501 191 Rubber stop – Rear axle	2	311-314, 343, 345, M 267, 361-364
2/61	–	361 501 191 Rubber stop – Rear axle	2	361-364
	–	311 501 201 OR Rear axle shaft (pink)	2	311-314, 343, 345
		up to Chassis No. 35 000		
	15	311 501 201 AB Rear axle shaft (blue)	2	
	–	311 501 201 AR Rear axle shaft (pink)	2	
		up to Chassis No. 76 299		
7/62	16	311 501 201 DB Rear axle shaft (blue)	2	
7/62	–	311 501 201 DR Rear axle shaft (pink)	2	
		from Chassis No. 76 300		
	17	311 501 221 Nut, slotted M 24×1.5 – Rear axle shaft	2	
5/62	18	N 12 545 2 Cotter pin 5×45 DIN 94	2	
5/62	19	111 501 281 A Spacer (inner) – Rear wheel bearing	2	
12/63	20	311 501 283 Ball bearing – Rear wheel	2	
	21	111 501 286 Washer between ball bearing and spacer	2	
	22	111 501 291 Gasket – Bearing cover	2	
		up to Chassis No. 76 299		
	23	111 501 296 Gasket between spacer and rear wheel bearing	2	
	24	111 501 303 A Spacer (outer) – Rear wheel bearing	2	
	25	111 501 311 B Cover – Rear wheel bearing	2	
		up to Chassis No. 76 299		
7/62	26	311 501 311 Cover – Rear wheel bearing	2	
		from Chassis No. 76 300		

Key No.	Part No.	Description	Quantity	Type and model	
	27	111 501 315	Oil seal (outer) – Rear wheel bearing	2	
7/62	28	211 501 315	Gasket – Bearing cover	2	
			from Chassis No. 76 300		
7/62	29	211 501 321	Oil thrower	2	
			from Chassis No. 76 300		
12/63	30	311 501 317	Washer 10.2×18	8	
	31	N 12 230 2	Spring washer B 10 DIN 137 galvanized	8	
12/63	32	311 501 325	Bolt, hex. head M 10×35 – Bearing cover	8	
7/62	A 2	361 501 505	Auxiliary spring	1	M 267, 361-364
7/62	A 3	361 501 511	Lever – Auxiliary spring	2	M 267, 361-364
7/62	A 4	N 14 708 1	Screw, cheese head M 8×1×18 DIN 912	2	M 267, 361-364
7/62	A 5	N 11 152 1	Nut, hex. M 8×1 DIN 936	2	M 267, 361-364
7/62	A 6	361 501 527	Operating rod, left	1	M 267, 361-364
7/62	–	361 501 528	Operating rod, right	1	M 267, 361-364
7/62	A 7	361 501 541	Silentbloc – Operating rod	2	M 267, 361-364
7/62	A 8	361 501 549	Rubber plug – Operating rod	2	M 267, 361-364
7/62	A 9	361 501 555	Support – Auxiliary spring	2	M 267, 361-364
7/62	A 10	N 10 240 1	Bolt, hex. head M 8×20 DIN 933	4	M 267, 361-364
7/62	A 11	N 12 008 2	Lock washer B 8 DIN 127 galvanized	4	M 267, 361-364
7/62	A 12	N 11 526 2	Washer B 8.4 DIN 125 high-polish galvanized ...	4	M 267, 361-364
7/62	A 13	361 501 565	Rubber bush – Auxiliary spring	2	M 267, 361-364
7/62	A 14	361 501 569	Screw M 12×1.5×82 – Operating rod	2	M 267, 361-364

Key No.	Part No.	Description	Quantity	Type and model
7/62	A 15	N 12 112 1 Spring washer J 12.5 DIN 6798	4	M 267, 361-364
10/62	A 16	361 501 575 Washer 8.8×30	2	M 267, 361-364
7/62	A 17	111 821 149 A Spring washer 8.1×22	2	M 267, 361-364
7/62	A 18	N 11 132 2 Nut, hex. M 8 DIN 70 616 galvanized	2	M 267, 361-364
	33	311 501 615 Brake drum, rear	2	
		up to Chassis No. 76 299		
7/62	34	311 501 615 D Brake drum, rear	2	
		from Chassis No. 76 300		
	35	311 501 631 Oil deflector – Brake drum	2	
		up to Chassis No. 76 299		
7/62	A 19	361 501 737 Rubber stop – Operating rod	2	M 267, 361-364
7/62	A 20	361 501 753 Guide bush – Operating rod	2	M 267, 361-364

Key No.	Part No.	Description	Quantity	Type and model
REAR SUSPENSION				
	36	311 511 115	Torsion bar (23 mm dia.), rear, left	1 311-314, 343, 345, M 267, 361-364
2/61	-	361 511 115	Torsion bar (24 mm dia.), rear, left	1 361-364
	-	311 511 116	Torsion bar (23 mm dia.), rear, right	1 311-314, 343, 345, M 267, 361-364
2/61	-	361 511 116	Torsion bar (24 mm dia.), rear, right	1 361-364
2/61	37	111 511 205 A	Spring plate	2
	38	111 511 225 C	Cover - Spring plate hub	2
	39	N 10 059 1	Bolt, hex. head M 10×18 DIN 70 614	8
	40	N 12 010 2	Lock washer B 10 DIN 127 galvanized	8
	41	311 511 245	Rubber bush, outer left and inner right - Spring plate hub	2
	42	311 511 246	Rubber bush, outer right and inner left - Spring plate hub	2

735 315 20

Printed in Germany

lement 14/63

Type 3

Key No.	Part No.	Description	Quantity	Type and model
SHOCK ABSORBER, REAR				
43	111 513 031 C	Shock absorber, rear	2	
-	111 513 031 D	Shock absorber, rear	2	
44	111 413 371 A	Bush - Rubber grommet	4	
45	111 413 381 A	Grommet - Shock absorber	4	
46	N 10 155 1	Bolt, hex. head M 12×1.5×55 S DIN 960 - Shock absorber mounting up to Chassis No. 168 497 from Chassis No. 168 498	4 2	
14/63 -	111 513 475 B	Bolt, hex. head M 12×1.5×80 - Shock absorber mounting, lower from Chassis No. 168 498	2	
47	111 513 479	Washer 12.1×23	2	
48	N 12 012 1	Lock washer B 12 DIN 127	4	
12/63 49	N 11 020 2	Nut, hex. M 12×1.5 DIN 934	2	